

# Post Mining Land Use

There are 22 coal mines in the Hunter region due to close in the next couple of decades, impacting nearly 50,000 jobs. By 2030 alone, almost 12,000 jobs will be gone unless we take action now.

Image: Black Rock Motor Resort

**\$20m**

## Our Ask

To replace imminent and substantial job losses right across the Hunter region from mine industry closures by 2030, urgently invest \$20M to enable Hunter councils to:

- Pilot the reactivation and repurposing of current and former mining lands and infrastructure, across a range of scenarios, to create urgently needed new employment lands across the region
- Directly de-risk industry investment and strategically inform and accelerate industry attraction, skills development and job creation urgently needed as the Hunter's economy rapidly transforms away from coal.



**Delivery of  
regional, local and  
site specific plans**



**Incentivise  
business  
development**



resulting  
in



**Keeping local  
jobs for local  
people**



will

## Outcome

- Clear and certain planning pathways for existing owners and incoming investors to reuse and adapt current mining and industrial lands to activate the Hunter's new and high value jobs.
- Reduce the significant commercial risk currently deterring new and expanded investment in the reuse of mining and industrial lands.
- Re-use existing infrastructure and already disturbed land to remain productive for local communities.
- Entice new, clean, high value industries based on net zero and circular economy principles such as renewable energy, smart manufacturing, resource recovery and high value agriculture.

# Hunter Region Post Mining Land Use

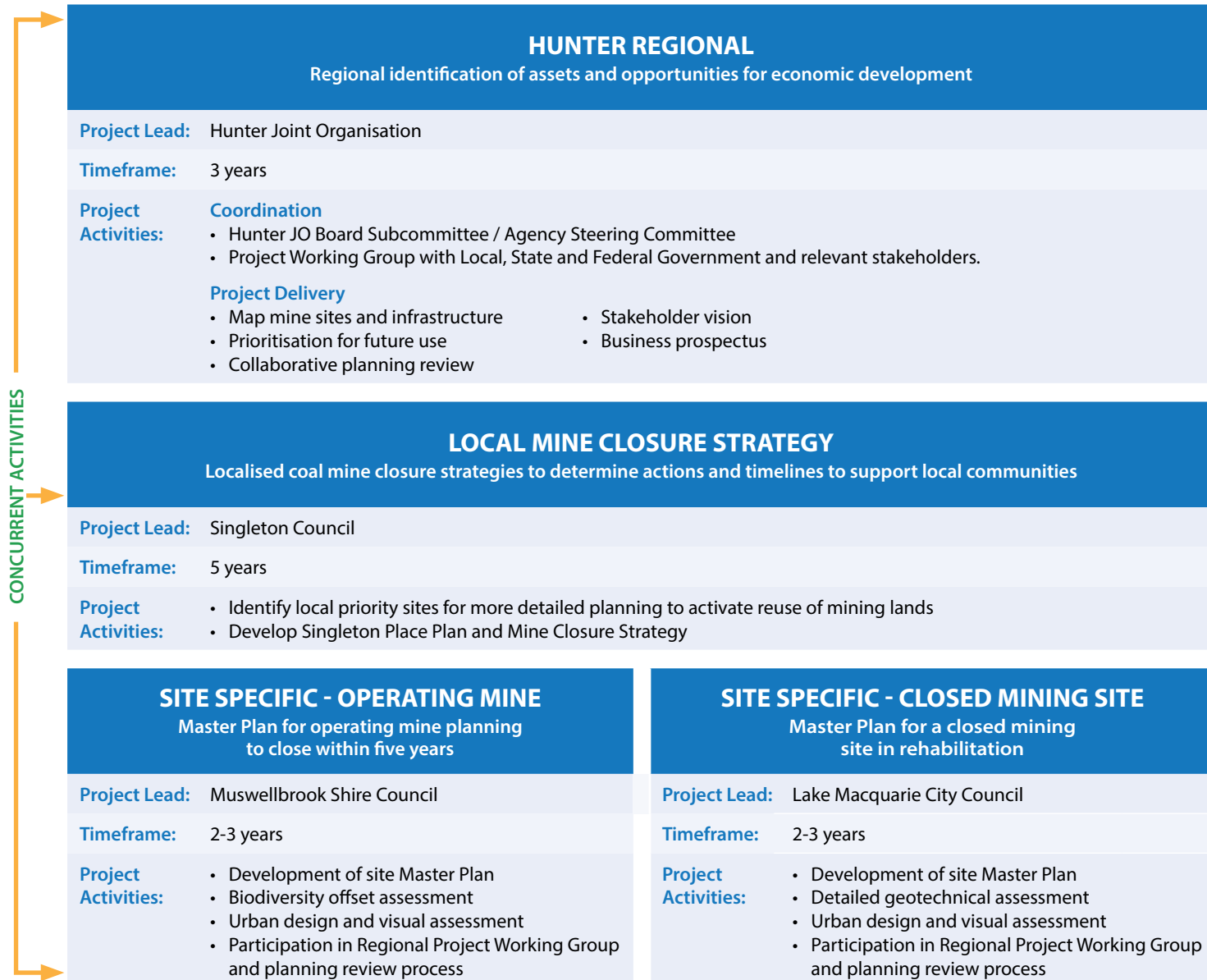
**\$20m**

## There needs to be greater urgency to plan for the impacts as we move away from coal.

- There are **22 coal mines in the Hunter region due to close** in the next couple of decades, impacting nearly **50,000 jobs**.
- **By 2030 alone, almost 12,000 jobs will be gone** unless we take action now.
- In 2023/24 budget, NSW mining royalties delivered \$3 billion to consolidated budget. There was **no funding made available to mining impacted communities**.

## We don't have time to waste - we need support to take action now.

We are proposing to undertake a regional audit of all mining lands and infrastructure across the Hunter, while simultaneously developing a pilot Place Based Mine Closure Strategy for Singleton and Master Plans for two identified priority mine sites in Muswellbrook and Lake Macquarie.



Outcomes from this approach can be used as a framework to accelerate planning for other mining regions and communities across NSW and Australia

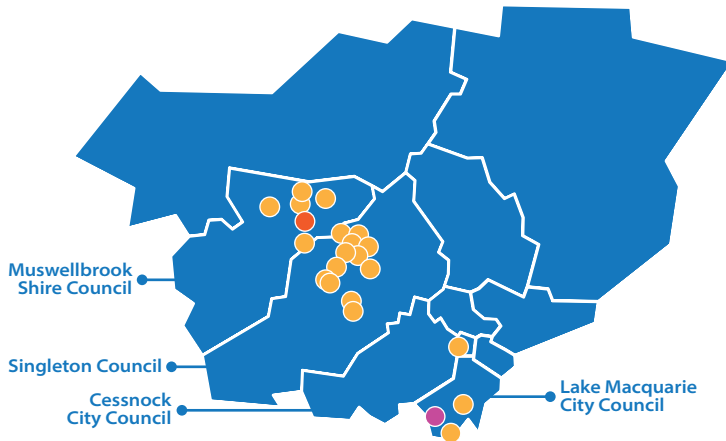
We'd love to continue the conversation. Please contact Kim Carland on 0460 034 614 or [kimc@hunterjo.nsw.gov.au](mailto:kimc@hunterjo.nsw.gov.au)

# Regional Context



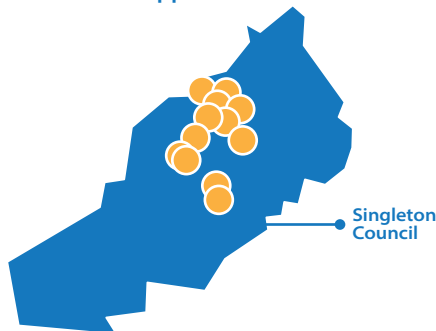
## HUNTER REGIONAL

Regional identification of assets and opportunities for economic development



## LOCAL

Localised coal mine closure strategies to determine actions and timelines to support local communities



## SITE SPECIFIC

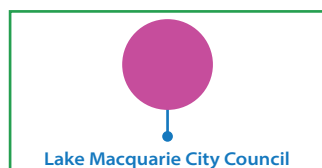
### OPERATING MINE

Master Plan for operating mine planning to close within five years



### CLOSED MINING SITE

Master Plan for a closed mining site in rehabilitation



● Coal Mines ● BHP Mt Arthur Coal Mine ● Glencore Macquarie Coal Mine

## Our Member Council Mayors



**Cr Sue Moore**  
Mayor Singleton Council  
Chair Hunter JO



**Cr Leah Anderson**  
Mayor Port Stephens Council  
Deputy Chair Hunter JO



**Cr Daniel Watton**  
Mayor Cessnock City Council



**Cr Digby Rayward**  
Mayor Dungog Shire Council



**Cr Philip Penfold**  
Mayor Maitland City Council



**Cr Adam Shultz**  
Mayor Lake Macquarie City Council



**Cr Claire Pontin**  
Mayor MidCoast Council



**Cr Jeffrey Drayton**  
Mayor Muswellbrook Shire Council



**Cr Ross Kerridge**  
Lord Mayor City of Newcastle



**Cr Maurice Collison**  
Mayor Upper Hunter Shire Council

We'd love to continue the conversation

Please contact Kim Carland on 0460 034 614 or [kimc@hunterjo.nsw.gov.au](mailto:kimc@hunterjo.nsw.gov.au)

