

Post Mining Land Use

The Hunter Region will experience coal mine closures over the next couple of decades, impacting nearly 50,000 jobs. By 2030 alone, almost 12,000 jobs will be gone unless we take action now.

Image: Black Rock Motor Resort

\$20m

Our Ask

To replace imminent and substantial job losses right across the Hunter region from mine industry closures by 2030, urgently invest \$20M to enable Hunter councils to:

- Pilot the reactivation and repurposing of current and former mining lands and infrastructure, across a range of scenarios, to create urgently needed new employment lands across the region
- Directly de-risk industry investment and strategically inform and accelerate industry attraction, skills development and job creation urgently needed as the Hunter's economy rapidly transforms away from coal.



**Delivery of
regional, local and
site specific plans**



**Incentivise
business
development**



resulting
in



**Keeping local
jobs for local
people**



will

Outcome

- Clear and certain planning pathways for existing owners and incoming investors to reuse and adapt current mining and industrial lands to activate the Hunter's new and high value jobs.
- Reduce the significant commercial risk currently deterring new and expanded investment in the reuse of mining and industrial lands.
- Re-use existing infrastructure and already disturbed land to remain productive for local communities.
- Entice new, clean, high value industries based on net zero and circular economy principles such as renewable energy, smart manufacturing, resource recovery and high value agriculture.

Hunter Region Post Mining Land Use

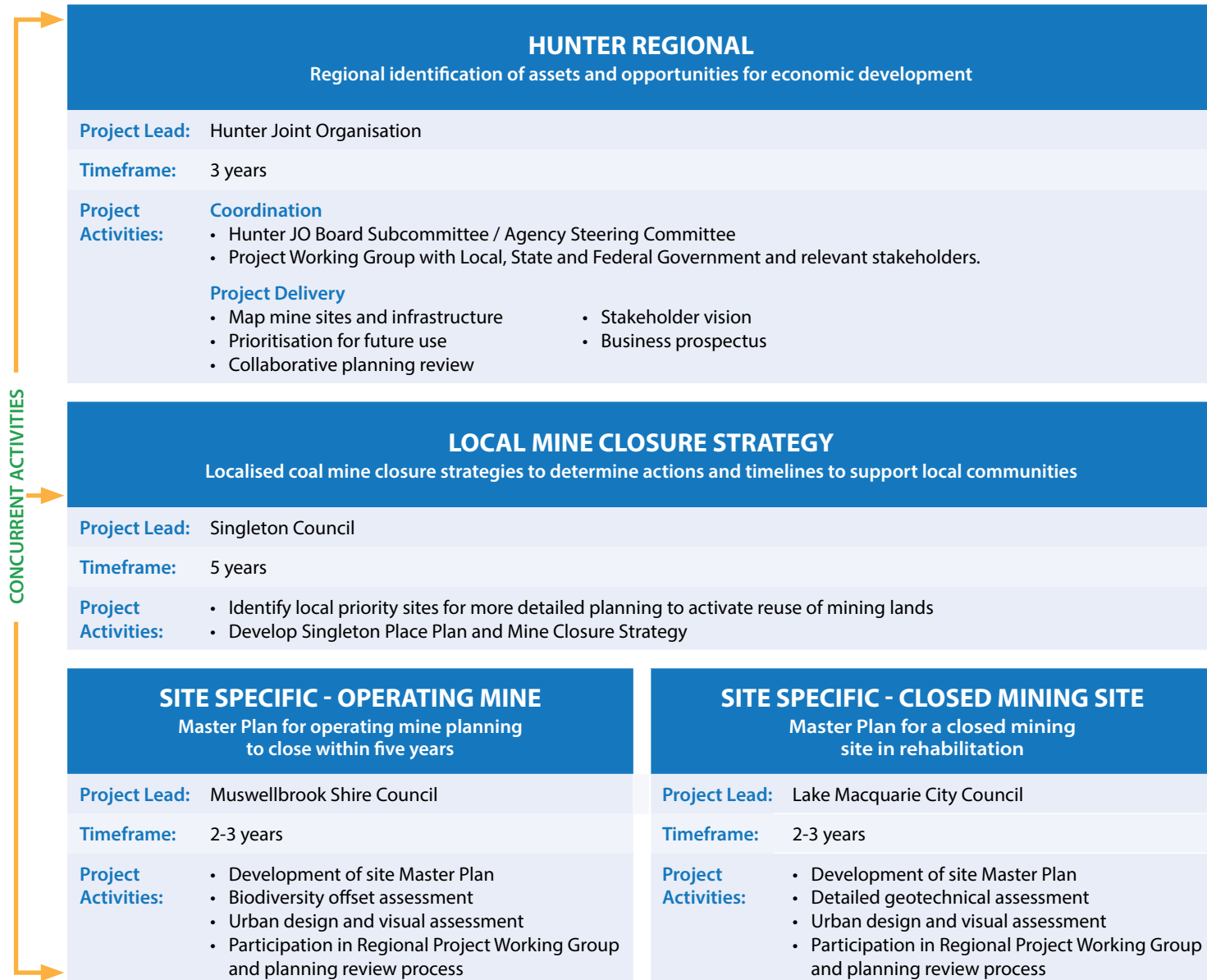
\$20m

There needs to be greater urgency to plan for the impacts as we move away from coal.

- The Hunter Region will experience coal mine closures over the next couple of decades, impacting nearly 50,000 jobs.
- By 2030 alone, almost 12,000 jobs will be gone unless we take action now.
- In 2023/24 budget, NSW mining royalties delivered \$3 billion to consolidated budget. There was no funding made available to mining impacted communities.

We don't have time to waste - we need support to take action now.

We are proposing to undertake a regional audit of all mining lands and infrastructure across the Hunter, while simultaneously developing a pilot Place Based Mine Closure Strategy for Singleton and Master Plans for two identified priority mine sites in Muswellbrook and Lake Macquarie.



Outcomes from this approach can be used as a framework to accelerate planning for other mining regions and communities across NSW and Australia

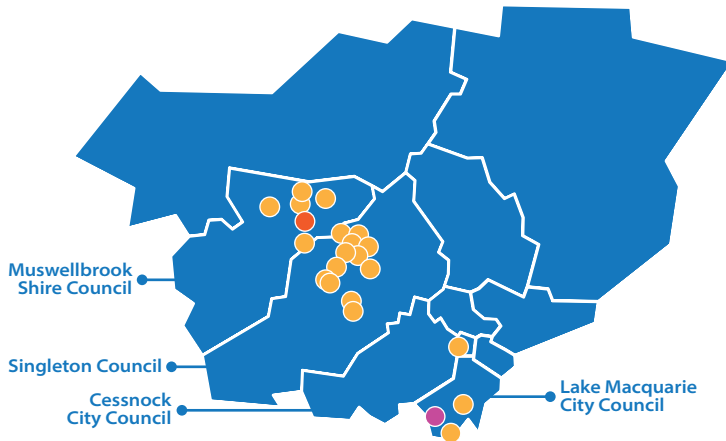
We'd love to continue the conversation. Please contact Kim Carland on 0460 034 614 or kimc@hunterjo.nsw.gov.au

Regional Context



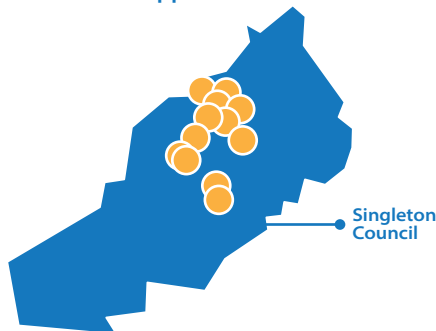
HUNTER REGIONAL

Regional identification of assets and opportunities for economic development



LOCAL

Localised coal mine closure strategies to determine actions and timelines to support local communities



SITE SPECIFIC

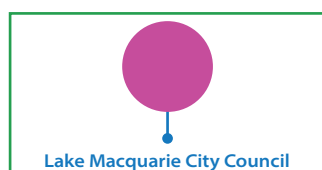
OPERATING MINE

Master Plan for operating mine planning to close within five years



CLOSED MINING SITE

Master Plan for a closed mining site in rehabilitation



● Coal Mines ● BHP Mt Arthur Coal Mine ● Glencore Macquarie Coal Mine

Our Member Council Mayors



Cr Sue Moore
Mayor Singleton Council
Chair Hunter JO



Cr Leah Anderson
Mayor Port Stephens Council
Deputy Chair Hunter JO



Cr Daniel Watton
Mayor Cessnock City Council



Cr Digby Rayward
Mayor Dungog Shire Council



Cr Philip Penfold
Mayor Maitland City Council



Cr Adam Shultz
Mayor Lake Macquarie City Council



Cr Claire Pontin
Mayor MidCoast Council



Cr Jeffrey Drayton
Mayor Muswellbrook Shire Council



Cr Ross Kerridge
Lord Mayor City of Newcastle



Cr Maurice Collison
Mayor Upper Hunter Shire Council

We'd love to continue the conversation

Please contact Kim Carland on 0460 034 614 or kimc@hunterjo.nsw.gov.au

